

**ENGINEERING  
CERTIFICATION  
FOR  
TRAP-LOC<sup>®</sup>  
BY SHAYER MILLWORK**

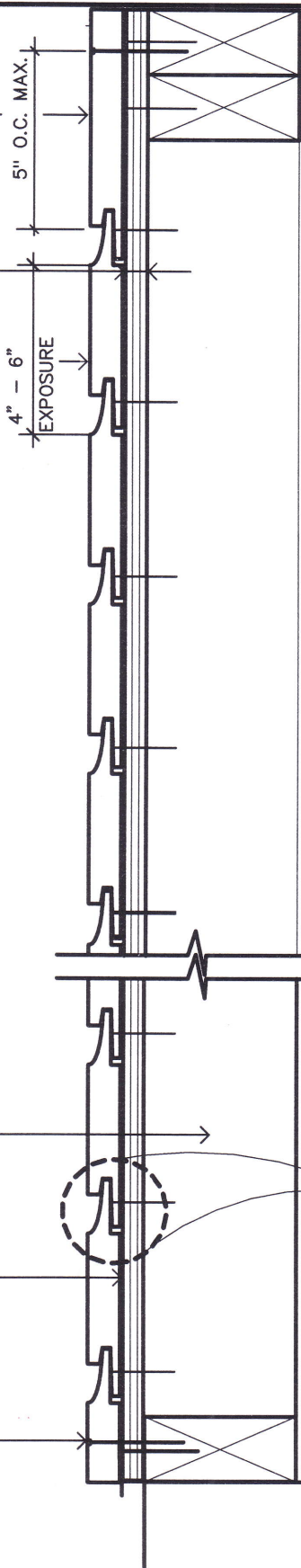
**MARCH, 2012**

U.S. PATENT: 7,712,277 B2

11" MAX. STARTER COURSE  
TO BE RIPPED FOR WIDTH  
NAILED TO PLATE W/ 2-1/2"  
X 0.131" S.S. FINISH NAILS  
INSTALLED @ 30 DEGREE ANGLE  
@ MAX 5" O.C. VERT.

7/16" MINIMUM 5/8" MAXIMUM  
APA RATED GROUP 1

CDX PLYWOOD  
3/4" THICK TRAP-LOC® SIDING  
#2 SYP OR CYPRESS  
JOINT DOES NOT HAVE TO  
LAND ON STUD



ASCE 7-10  
MEAN ROOF HEIGHT 30'  
ENCLOSURE N/A  
ALLOWABLE DESIGN PRESSURE NOM.

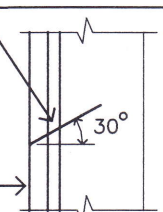
NAIL .092" X 2-1/4"	#2 SYP STUD		#2 SPF STUD	
	+/- PSF	MPH	+/- PSF	MPH
EXPOSURE "D"	111	228+	58	165
EXPOSURE "C"	111	>250	58	180
NAIL .099" X 2-1/2"	#2 SYP STUD		#2 SPF STUD	
	+/- PSF	MPH	+/- PSF	MPH
EXPOSURE "D"	138	255+	70	182
EXPOSURE "C"	138	>277	70	197

DESIGN OF STUDS AND PLYWOOD BY ENGINEER OF RECORD  
DESIGN PRESSURES ARE FOR SIDING ONLY.

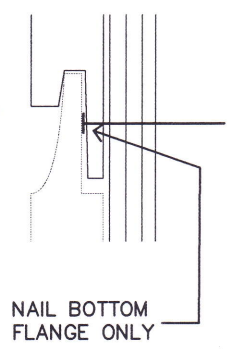
2X STUDS @ 16" O.C.  
SPECIFIC GRAVITY 0.42  
MINIMUM  
(SPF=0.42)  
(SYP=0.55)

PROVIDE VAPOR BARRIER  
OVER PLYWOOD

11" MAX. STARTER COURSE  
TO BE RIPPED FOR WIDTH  
NAILED TO PLATE W/ 2-1/2"  
X 0.131" S.S. FINISH NAILS  
INSTALLED @ 30 DEGREE ANGLE  
@ MAX 5" O.C. VERT.



HALF SIZE PLAN VIEW  
AT BOTTOM PLATE



NAIL BOTTOM  
FLANGE ONLY

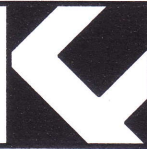
FRAME WALL DETAIL

March 27, 2012

SCALE 3" = 1'-0"

Sheet 1 of 4

TRAP-LOC® SIDING  
U.S. PATENT 7,712,277 B2  
WOOD FRAMING DETAIL



FARLEY ENGINEERING, LLC.

Consulting Engineer #40111 - CA28108

8800 N. U.S. #1, Suite #2, Sebastian, Florida 32958

(772) 589.6229

(772) 589.2296 fax

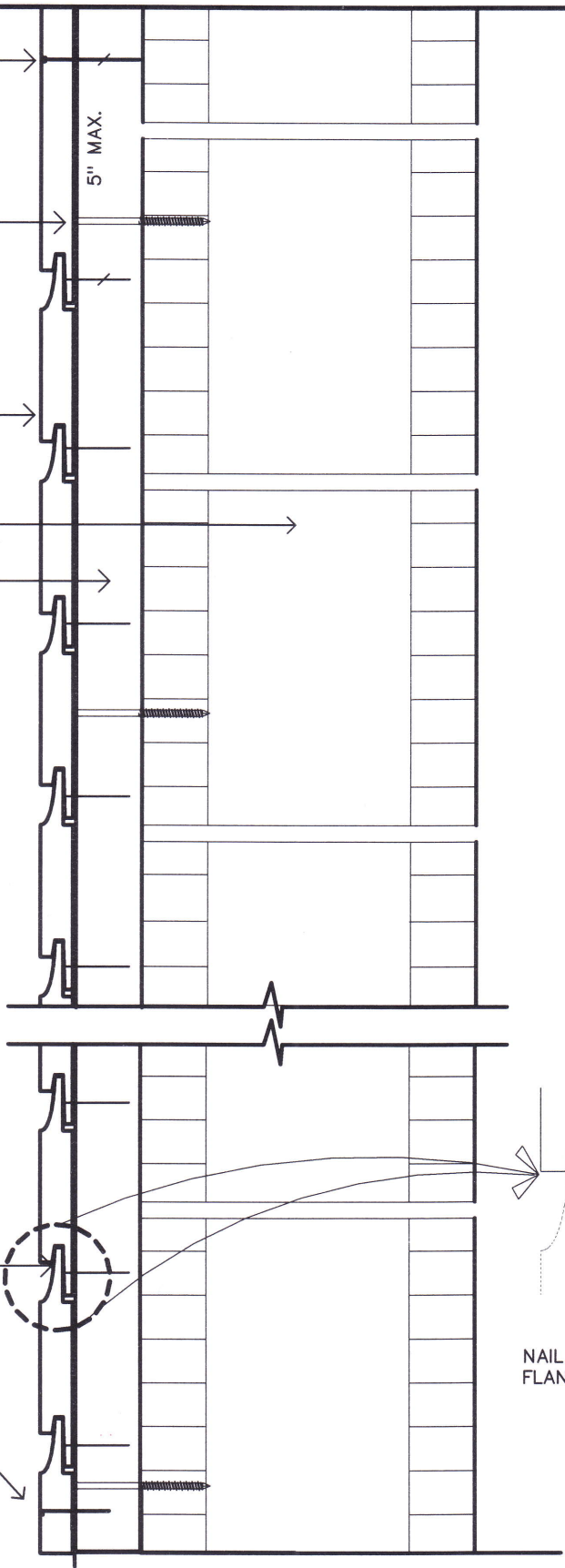
11" MAX. STARTER COURSE  
TO BE RIPPED FOR WIDTH  
NAILED TO FURRING W/ 2-1/2"  
X 0.131" S.S. FINISH NAILS  
INSTALLED @ 30 DEGREE ANGLE  
@ MAX 5" O.C. VERT.

3/8" X 1" EMBED HILTI QUICK CON  
SPACED PER TABLE OR  
UNIVERSAL KNURLED SHANK X-C  
"HILTI" X-C POWER PIN  
0.157" X 1" EMBED INTO  
CMU ( NOT WITHIN 1" OF  
BED OR HEAD JOINT) @ 10" O.C.  
(70# PULLOUT CAPACITY)

3/4" THICK TRAP-LOC<sup>®</sup> SIDING  
#2 SYP OR CYPRESS  
JOINT DOES NOT HAVE TO  
LAND ON FURRING STRIP  
OFFSET JOINT 32" MIN.

HOLLOW CMU CONFORMS  
TO ASTM C-90

2X2 #2 SYP FURRING STRIP  
@ 16" O.C.,



ASCE 7-10  
MEAN ROOF HEIGHT 30'  
ENCLOSURE N/A  
ALLOWABLE DESIGN PRESSURE - NOM.

170 MPH ULT EXP "D"			
ZONE	NOMINAL D.P.	TAPCON	HILTI X-C
END ZONE	61.2	21" O.C.	10" O.C.
INTERIOR ZONE	48	24" O.C.	13" O.C. MAX.
170 MPH ULT EXP "C" - 160 MPH ULT EXP "C"			
ZONE	NOMINAL D.P.	TAPCON	HILTI K-C
END ZONE	54.3	24" O.C.	12" O.C.
INTERIOR ZONE	43	24" O.C.	14" O.C.

DESIGN PRESSURE IS FOR SIDING, FURRING  
AND FURRING ATTACHMENT ONLY  
THIS DESIGN IS IN ACCORDANCE WITH  
SECTION 703.1.2 2010 FBCR

SIDING NAIL 1-1/2" X 0.082" FULL HEAD

11" MAX. STARTER COURSE  
TO BE RIPPED FOR WIDTH  
NAILED TO FURRING W/ 2-1/2"  
X 0.131" S.S. FINISH NAILS  
INSTALLED @ 30 DEGREE ANGLE  
@ MAX 5" O.C. VERT.

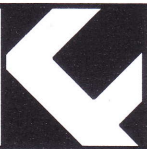
2X2 FURRING STRIP @ 16" O.C.  
HALF SIZED PLAN VIEW  
SHOWING DIAGONAL NAILING  
AT TOP AND BOTTOM COURSE  
(2) 0.131" X 2-1/2" S.S.  
FINISH NAIL, ATTACHED AT 30°  
ACROSS EACH OTHER



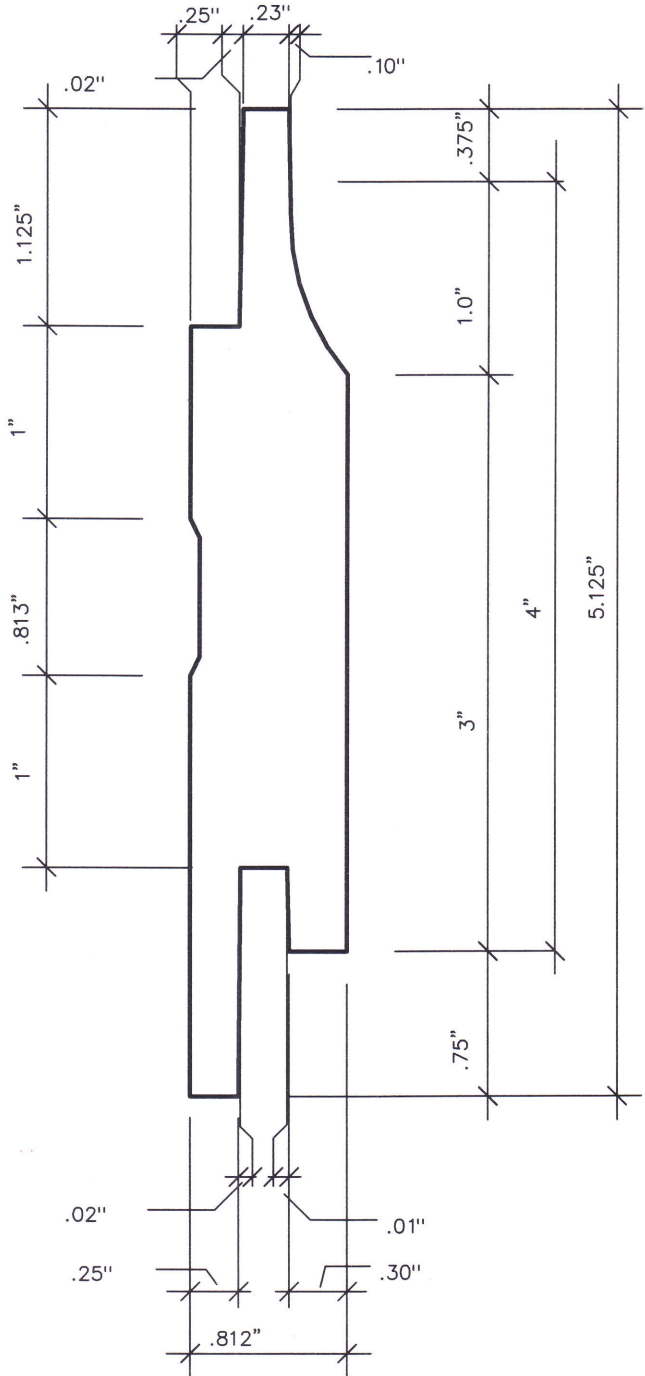
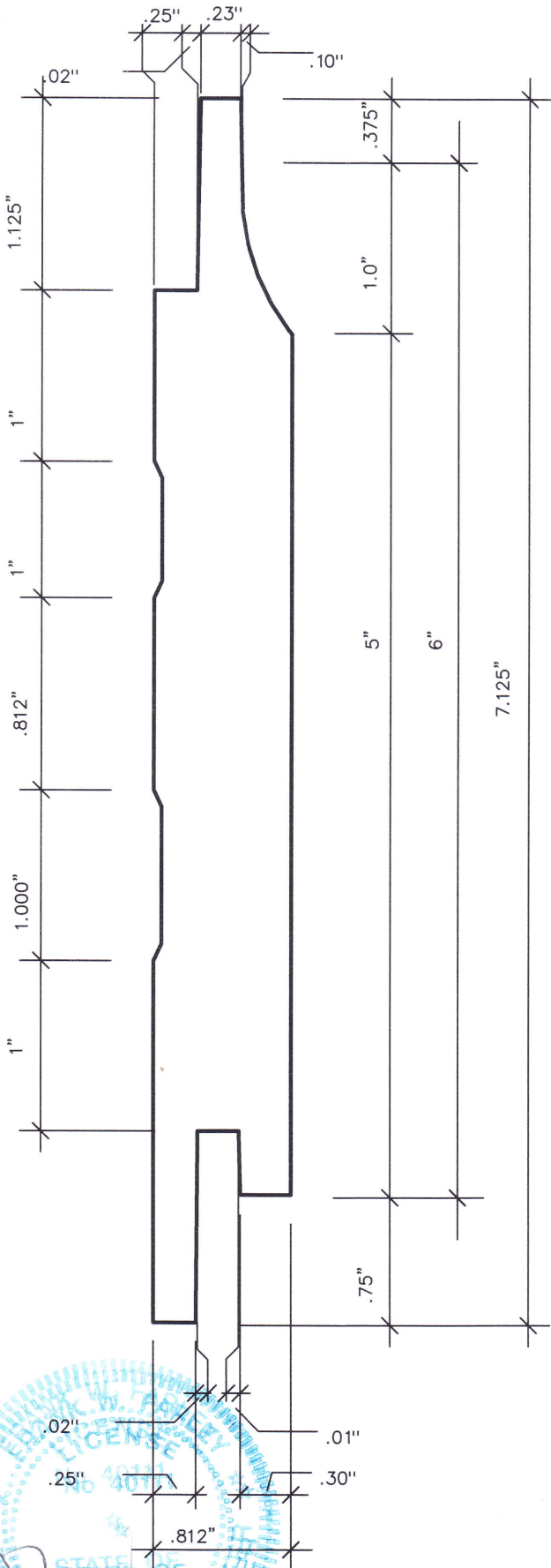
NAIL BOTTOM  
FLANGE ONLY

CMU WALL DETAIL  
March 27, 2012  
SCALE 3" = 1'-0"  
Sheet 2 of 4

TRAP-LOC<sup>®</sup> SIDING  
U.S. PATENT 7,712,277 B2  
CMU WALL ATTACHMENT



**FARLEY ENGINEERING, LLC.**  
Consulting Engineer #40111 - CA28108  
8800 N. U.S. #1, Suite #2, Sebastian, Florida 32958  
(772) 589.6229 (772) 589.2296 fax



PROFESSIONAL ENGINEER  
 LICENSE #40111  
 STATE OF FLORIDA  
 CIVIL ENGINEERING

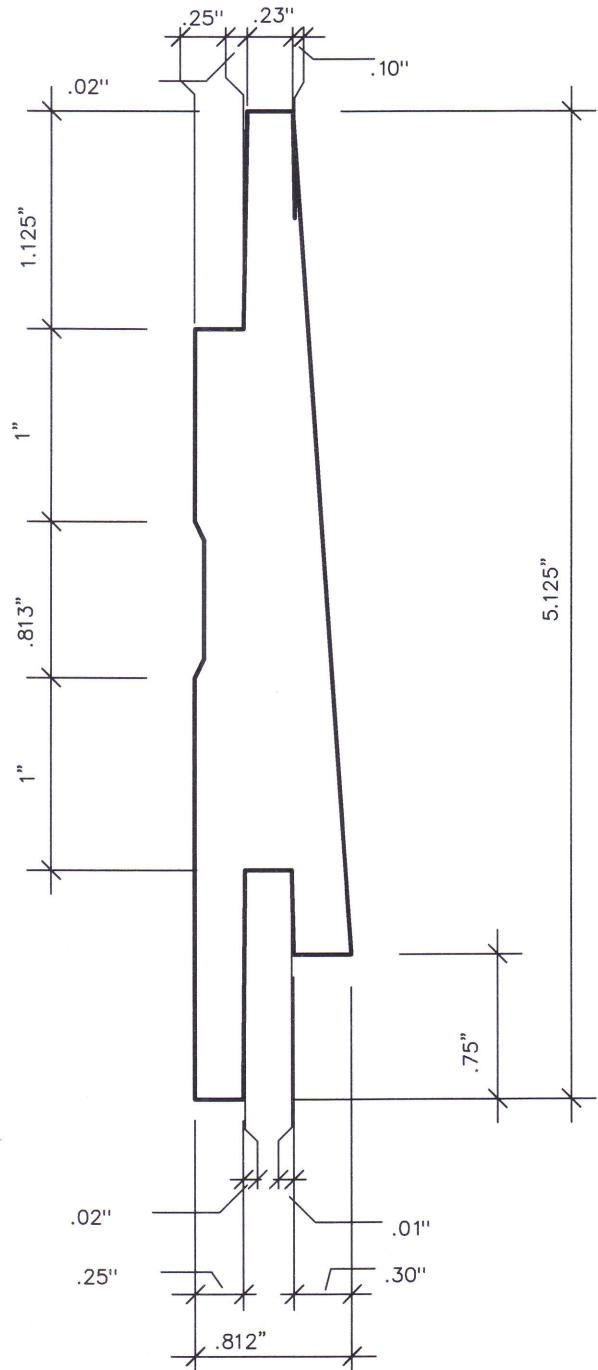
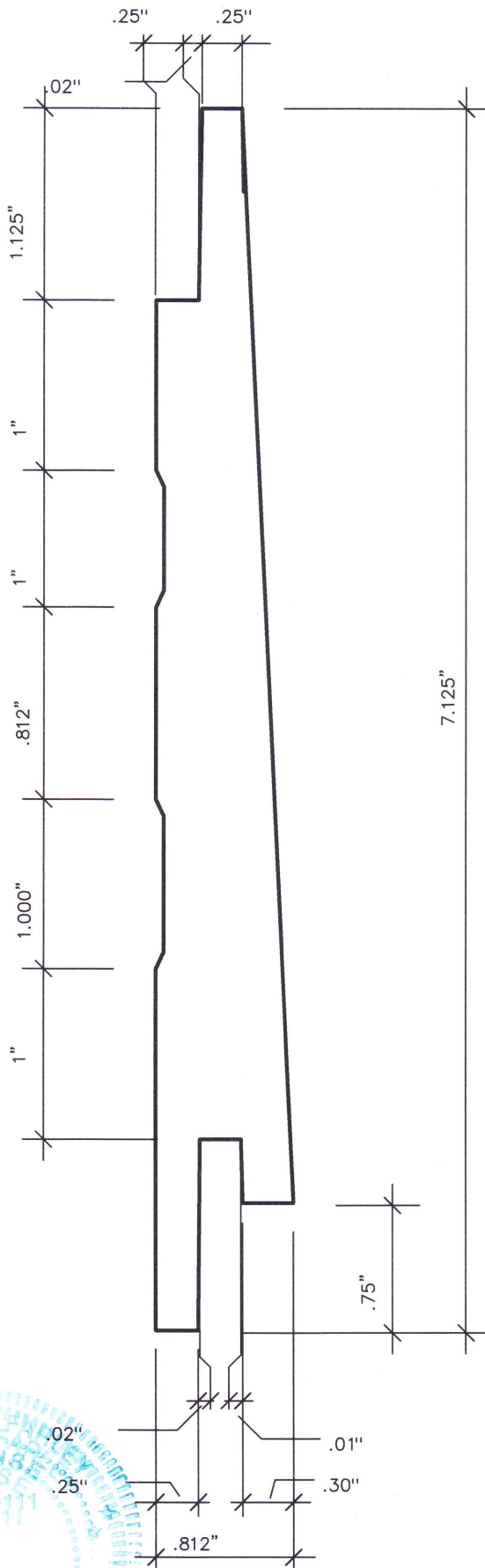
SHIP LAP  
 March 27, 2012  
 FULL SCALE  
 Sheet 3 of 4

TRAP-LOC® SIDING  
 U.S. PATENT 7,712,277 B2



FARLEY ENGINEERING, LLC.

Consulting Engineer #40111 - CA28108  
 8800 N. U.S. #1, Suite #2, Sebastian, Florida 32958  
 (772) 589.6229 (772) 589.2296 fax



+TYPICAL LAP

March 27, 2012

FULL SCALE

Sheet 4 of 4

TRAP-LOC<sup>®</sup> SIDING  
U.S. PATENT 7,712,277 B2



FARLEY ENGINEERING, LLC.

Consulting Engineer #40111 - CA28108  
8800 N. U.S. #1, Suite #2, Sebastian, Florida 32958  
(772) 589.6229 (772) 589.2296 fax

